

VX-548

Nav1.8 sodium channel

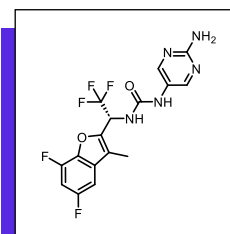
oral Nav1.8 selective inhibitor

Ph. III for acute pain

discovery undisclosed

N. Engl. J. Med., August 2023

VERTEX PHARMACEUTICALS, SAN DIEGO, CA



STX-478

PI3Ka

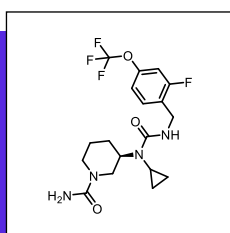
mutant-selective, allosteric PI3Ka inhibitor

Ph. I/II for breast cancer and other solid tumors

from affinity selection mass spectrometry (ASMS) screen

Cancer Discov., August 2023

SCORPION THERAPEUTICS, BOSTON, MA



JNT-517

SLC6A19

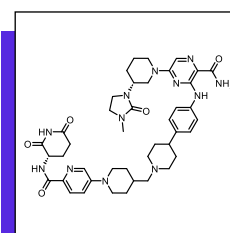
oral allosteric SLC6A19 inhibitor

Ph. Ib for PKU

from RAPID screen for cryptic allosteric modulators

First Disclosures, ACS Fall 2023

JNANA THERAPEUTICS, BOSTON, MA



NX-5948

BTK

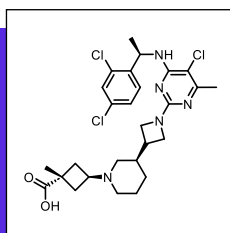
oral BTK degrader

Ph. I for B-cell malignancies

from optimization of CRBN ligand and BTK-ligand for degradation

First Disclosures, ACS Fall 2023

NURIX THERAPEUTICS, SAN FRANCISCO, CA



RPT193

CCR4

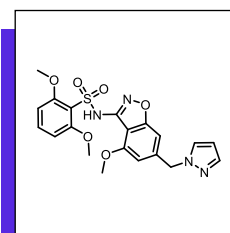
oral selective CCR4 antagonist

Ph. II for atopic dermatitis and T2-high asthma

from optimization of FLX475

First Disclosures, ACS Fall 2023

RAPT THERAPEUTICS, SO. SAN FRANCISCO, CA



PF-9363

KAT6A/B

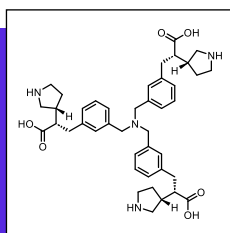
oral selective KAT6A/B inhibitor

related PF-07248144 in Ph. I for ER+ HER2 breast cancer

from HTS of 250k compound library

Cell Chem. Biol., August 2023

PFIZER, CA/ CANCER THERAPEUTICS, AU



muvalaplin

Lp[a]

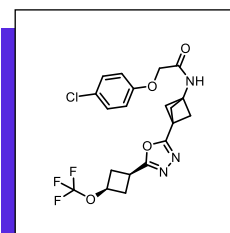
oral Lp[a] disruptor

Ph. II for ASCVD

from computational modeling and library screening

JAMA, August 2023

ELI LILLY, MADRID, ES



DNL343

eIF2B

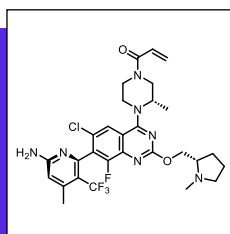
oral CNS-penetrant eIF2B activator

Ph. II/III for ALS

discovery undisclosed

bioRxiv, August 2023

DENALI, SO. SAN FRANCISCO, CA



divarisib

KRAS^{G12C}

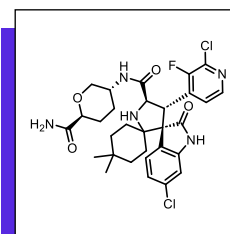
oral selective covalent KRAS^{G12C} inhibitor

Ph. III for NSCLC

from disulfide-tether fragment screen

N. Engl. J. Med., August 2023

GENENTECH, SO. SAN FRANCISCO, CA



milademetan

MDM2

oral MDM2-p53 PPI inhibitor

Ph. III for DD LPS, negative data

discovery undisclosed

Cancer Discov., August 2023

DAIICHI SANKYO, JP / RAIN ONCOLOGY, CA