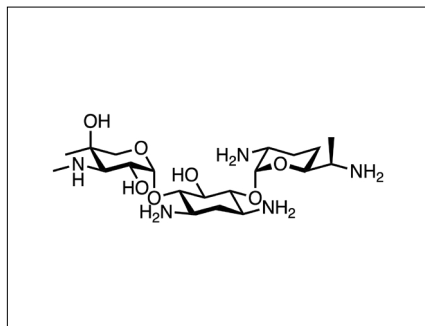


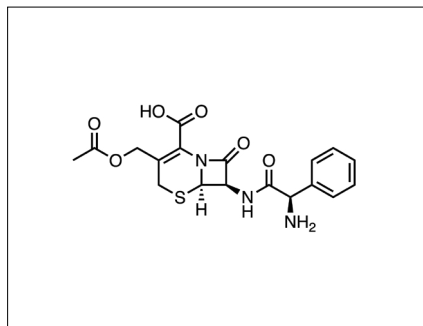
Examples of Polar Drugs from 1970 and 2021

1970



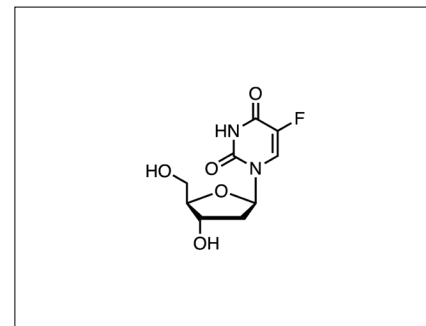
gentamicin

cLogP = -4.1



cephaloglycin

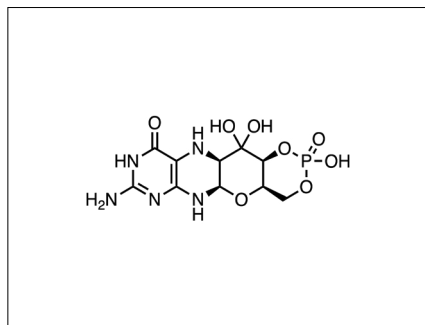
cLogP = -3.0



floxuridine

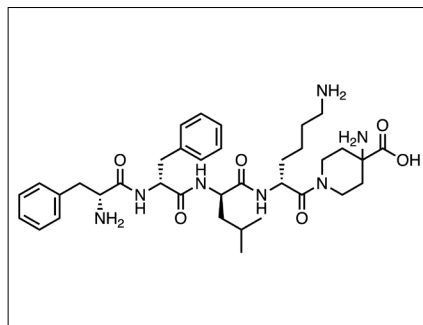
cLogP = -1.2

2021



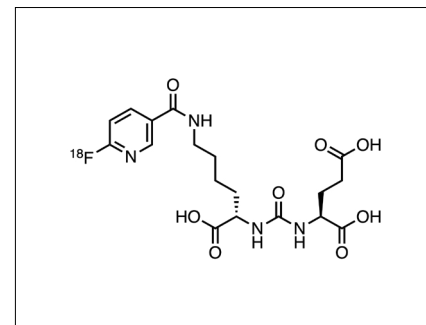
fosdenopterin

cLogP = -4.0



difelikefalin

cLogP = -0.6



piflufolastat F-18

cLogP = -0.1