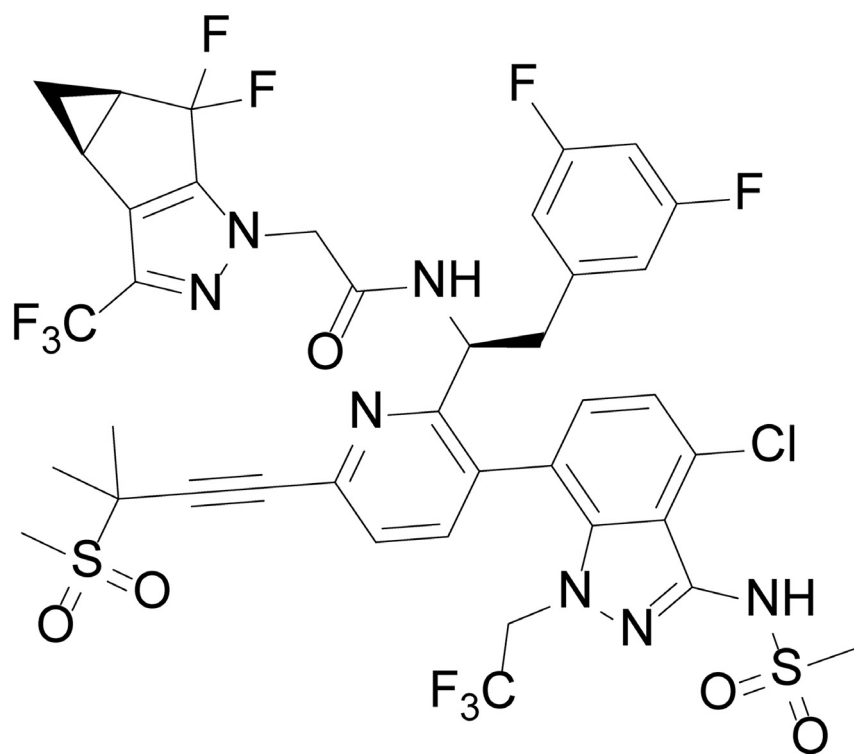


What You Liked About GS-6207



“Such a **non-traditional** yet **very impressive** compound - the long-acting injectable pharmacokinetics, extended structure, **targeting a PPI...**”

“Mode of action, **nicely engineered** molecular interactions, PK profile, acetylene spacer to position sulfone in the right spot...”

“**Complexity** of the molecule - **very interesting** functionalities and scaffold”

“Really **hard**” “Good synthesis”

“The complex chemical structure, its **mode of action** and its **dosing** regime”

“**Interesting** ring and difluoro- motif”